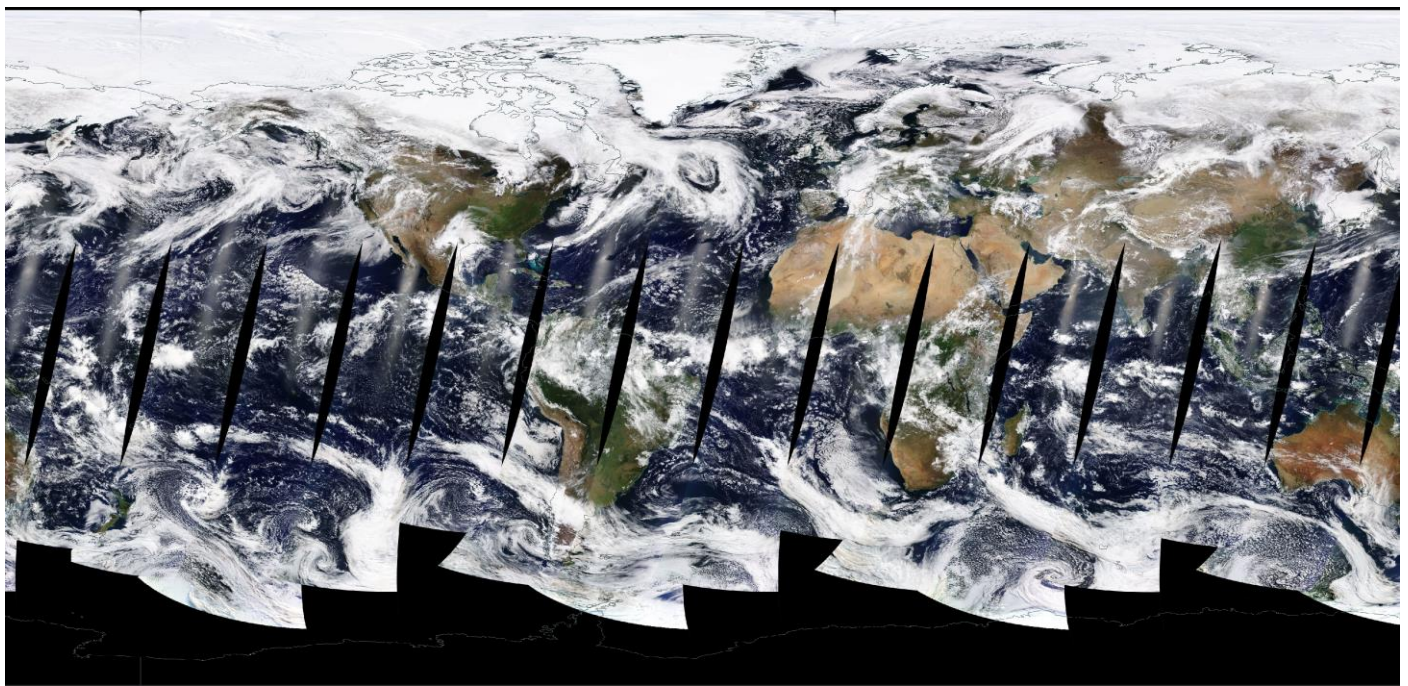


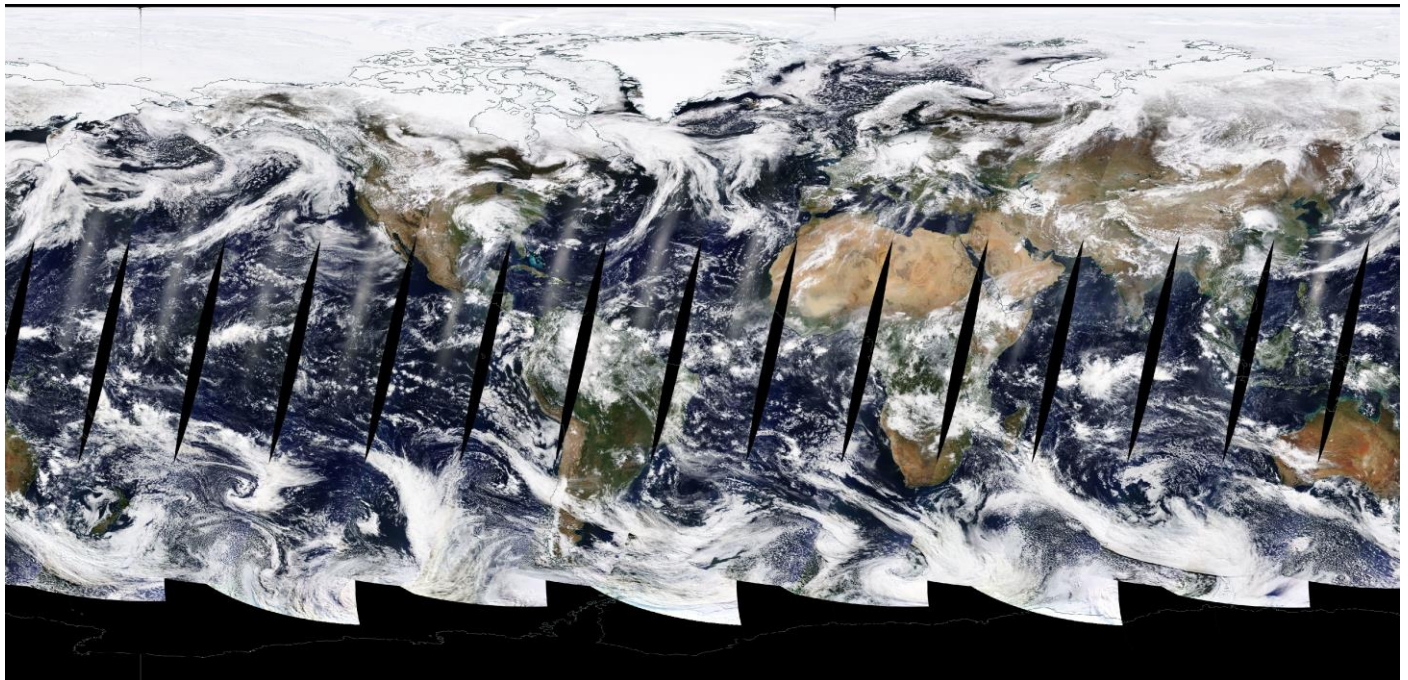
## Geographic view

May 1



Updated STS  
went into  
effect May 2.  
As expected,  
coverage  
toward South  
Pole is  
improved.

May 2

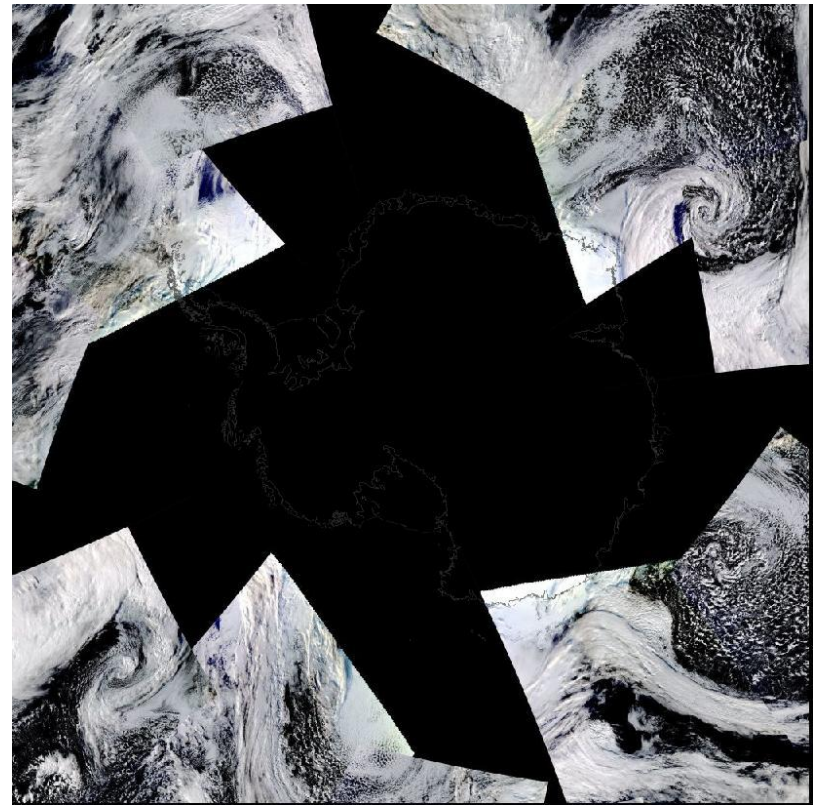


Images provided  
by: NASA  
Worldview

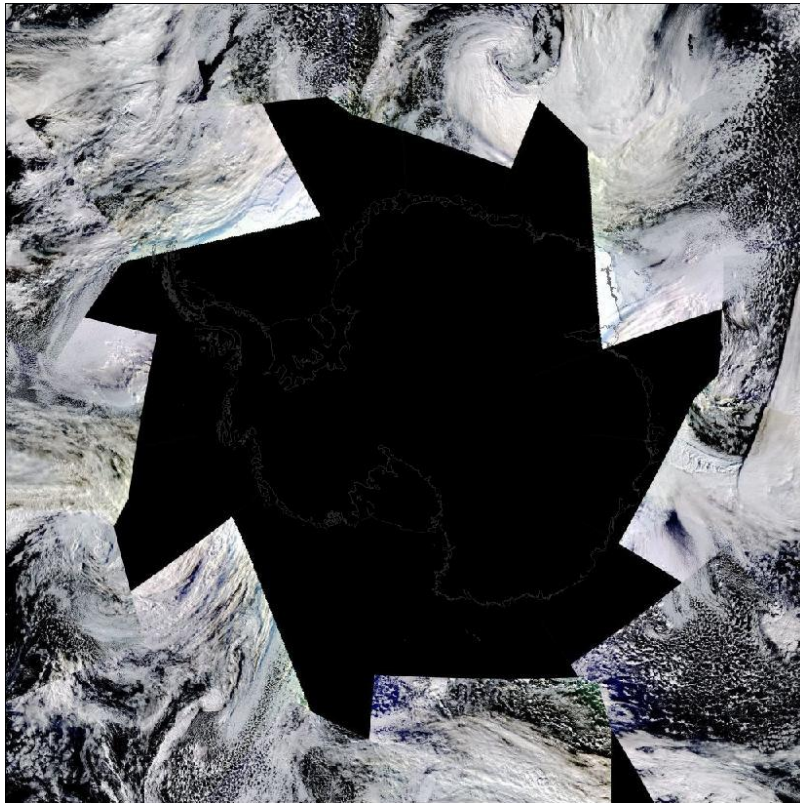


Antarctic view

May 1 (before change)

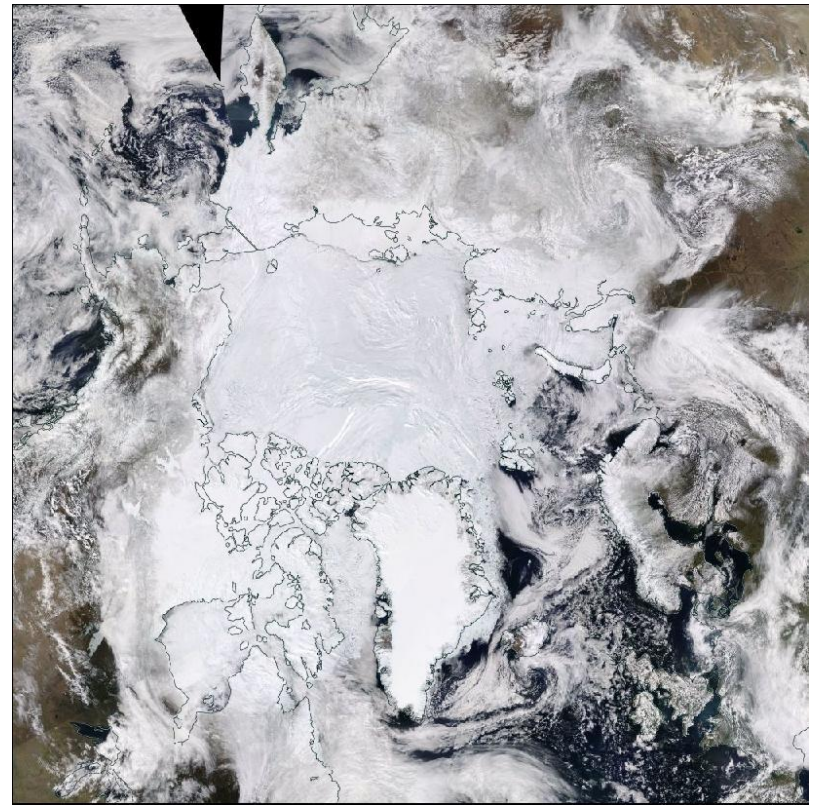


May 2 (after change)



Arctic view

May 1 (before change)



May 2 (after change)

